

PLA-SM R32

4-Way Blow Ceiling Cassette System

Inverter Heat Pump

Mr. SLIM™

Our **PLA-SM Inverter** range offers customers all the features and benefits of inverter technology whilst being cost effective.

R32

Key Features & Benefits:

- Inverter cassette range only
- Single combination only
- Up to 40m pipe run
- Cost effective with the benefits and features of inverter technology
- Filter lowering operation down to 4m (optional PLP-6EAJ grille required)



Air Conditioning Product Information

PLA-SM R32 4-Way Blow Ceiling Cassette System Inverter Heat Pump

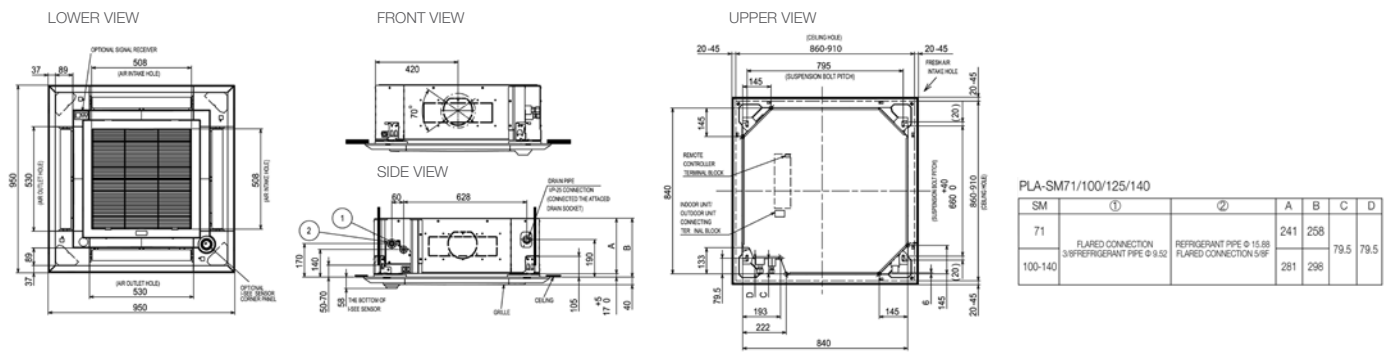


PLA-SM INDOOR UNITS		PLA-SM71EA	PLA-SM100EA	PLA-SM100EA	PLA-SM125EA	PLA-SM125EA	PLA-SM140EA	PLA-SM140EA
CAPACITY (kW)	Heating (nominal)	8.0 (2.2-8.1)	11.2 (2.8-12.5)	11.2 (2.8-12.5)	13.5 (4.1-15.0)	13.5 (4.1-15.0)	15.0 (4.2-15.8)	15.0 (4.2-15.8)
	Cooling (nominal)	7.1 (2.2-8.1)	9.5 (4.0-10.6)	9.5 (4.0-10.6)	12.1 (5.8-13.0)	12.1 (5.8-13.0)	13.4 (5.8-14.1)	13.4 (5.8-14.1)
	Heating (UK)	6.80 (1.87-6.89)	9.63 (2.41-10.75)	9.63 (2.41-10.75)	11.61 (3.53-12.90)	11.61 (3.53-12.90)	12.90 (3.61-13.59)	12.90 (3.61-13.59)
	Cooling (UK)	6.53 (2.03-7.45)	8.55 (3.60-11.25)	8.55 (3.60-11.25)	10.89 (5.22-11.70)	10.89 (5.22-11.70)	11.61 (5.22-12.69)	11.61 (5.22-12.69)
SHF (nominal)		0.75	0.77	0.77	0.73	0.73	0.70	0.70
COP / EER (nominal)		3.50 / 3.60	3.61 / 3.40	3.61 / 3.40	3.61 / 2.90	3.61 / 2.90	3.30 / 2.61	3.30 / 2.61
SCOP (ηsh) / SEER (ηsc) (BS EN14825)		3.90 / 6.00	4.50 / 6.00	4.50 / 6.00	3.9 (154.1%) / 5.5 (225.2%)	3.9 (154.1%) / 5.5 (225.2%)	3.9 (153.3%) / 5.5 (224.9%)	3.9 (153.3%) / 5.5 (224.9%)
ErP ENERGY EFFICIENCY CLASS	Heating/Cooling	A / A+	A+ / A+	A+ / A+	A / A	A / A	A / A	A / A
AIRFLOW (l/s)	Lo-Mi1-Mi2-Hi	233-283-317-350	317-383-433-483	317-383-433-483	350-417-467-517	350-417-467-517	400-433-483-533	400-433-483-533
PIPE SIZE (mm (in))	Gas/ Liquid	15.88 (5/8") / 9.52 (3/8")	15.88 (5/8") / 9.52 (3/8")	15.88 (5/8") / 9.52 (3/8")	15.88 (5/8") / 9.52 (3/8")	15.88 (5/8") / 9.52 (3/8")	15.88 (5/8") / 9.52 (3/8")	15.88 (5/8") / 9.52 (3/8")
SOUND PRESSURE LEVEL (dBA)	Lo-Mi1-Mi2-Hi	28-30-32-34	31-34-37-40	31-34-37-40	33-37-41-44	33-37-41-44	36-39-42-44	36-39-42-44
SOUND POWER LEVEL (dB(A))		56	61	61	65	65	65	65
DIMENSIONS (mm)	Width x Depth x Height (Grille)	840 (950) x 840 (950) x 258 (40)	840 (950) x 840 (950) x 298 (40)	840 (950) x 840 (950) x 298 (40)	840 (950) x 840 (950) x 298 (40)	840 (950) x 840 (950) x 298 (40)	840 (950) x 840 (950) x 298 (40)	840 (950) x 840 (950) x 298 (40)
WEIGHT (kg)	Unit / Panel	21 (5)	24 (5)	24 (5)	26 (5)	26 (5)	26 (5)	26 (5)
ELECTRICAL SUPPLY		Fed by Outdoor Unit	Fed by Outdoor Unit	Fed by Outdoor Unit	Fed by Outdoor Unit	Fed by Outdoor Unit	Fed by Outdoor Unit	Fed by Outdoor Unit
FUSE RATING (BS88) - HRC (A)		6	6	6	6	6	6	6
INTERCONNECTING CABLE No. CORES		4	4	4	4	4	4	4
GRILLE REFERENCE		PLP-6EA	PLP-6EA	PLP-6EA	PLP-6EA	PLP-6EA	PLP-6EA	PLP-6EA
WIRED REMOTE CONTROLLER REFERENCE		PAR-40MAA	PAR-40MAA	PAR-40MAA	PAR-40MAA	PAR-40MAA	PAR-40MAA	PAR-40MAA
WIRELESS REMOTE CONTROLLER REFERENCE		PAR-SL100A-E	PAR-SL100A-E	PAR-SL100A-E	PAR-SL100A-E	PAR-SL100A-E	PAR-SL100A-E	PAR-SL100A-E

SUZ-SM / PUZ-SM OUTDOOR UNITS		SUZ-SM71VA	PUZ-SM100VKA	PUZ-SM100YKA	PUZ-SM125VKA	PUZ-SM125YKA	PUZ-SM140VKA	PUZ-SM140YKA
SOUND PRESSURE LEVEL (dBA)	Heating/Cooling	51 / 49	54 / 51	54 / 51	56 / 54	56 / 54	57 / 55	57 / 55
SOUND POWER LEVEL (dB(A))	Cooling	66	70	70	72	72	73	73
WEIGHT (kg)		55	76	78	84	85	84	85
DIMENSIONS (mm)	Width x Depth x Height	840 x 330 x 880	1050 x 330 x 981	1050 x 330 x 981	1050 x 330 x 981	1050 x 330 x 981	1050 x 330 x 981	1050 x 330 x 981
ELECTRICAL SUPPLY		220-240v, 50Hz	220-240v, 50Hz	380-415v, 50Hz	220-240v, 50Hz	380-415v, 50Hz	220-240v, 50Hz	380-415v, 50Hz
PHASE		Single	Single	Three	Single	Three	Single	Three
SYSTEM POWER INPUT (kW)	Heating/Cooling (nominal)	2.28 / 1.97	3.10 / 2.79	3.10 / 2.79	3.73 / 4.17	3.73 / 4.17	4.54 / 5.13	4.54 / 5.13
	Heating/Cooling (UK)	1.94 / 1.70	2.64 / 2.40	2.64 / 2.40	3.17 / 3.59	3.17 / 3.59	3.87 / 4.14	3.87 / 4.14
STARTING CURRENT (A)		9.7	13.4	4.8	17.4	6.3	22.3	8.1
SYSTEM RUNNING CURRENT (A)	Heating/Cooling [MAX]	9.7 / 8.3 [14.8]	13.4 / 12.1 [20.0]	4.8 / 4.3 [11.5]	15.6 / 17.4 [26.5]	5.6 / 6.3 [11.5]	19.0 / 22.3 [30.0]	6.9 / 8.1 [11.5]
FUSE RATING (BS88) - HRC (A)		20	32	16	32	16	40	16
MAINS CABLE No. CORES		3	3	5	3	5	3	5
MAX PIPE LENGTH (m)		30	30	30	40	40	40	40
MAX HEIGHT DIFFERENCE (m)		30	30	30	30	30	30	30
CHARGE REFRIGERANT (kg) / CO ₂ EQUIVALENT (t) - R32 (GWP 675)		1.45 / 0.98 (7m)	3.10 / 2.09 (30m)	3.10 / 2.09 (30m)	3.60 / 2.43 (30m)	3.60 / 2.43 (30m)	3.60 / 2.43 (30m)	3.60 / 2.43 (30m)
MAX ADDITIONAL REFRIGERANT (kg) / CO ₂ EQUIVALENT (t) - R32 (GWP 675)		2.37 / 1.80	N/A	3.50 / 2.36	4.00 / 2.70	4.00 / 2.70	4.00 / 2.70	4.00 / 2.70

Note: The PLP-6EAE 3D I-See sensor grille or PAC-SE1ME-E corner panel will NOT operate with this model.

PLA-SM71/100/125/140EA DIMENSIONS



Telephone: 01707 282880
email: air.conditioning@meuk.mee.com
les.mitsubishielectric.co.uk



Mitsubishi Electric Living
Environmental Systems UK



Mitsubishi Electric
Cooling and Heating UK



[mitsubishielectricuk_les](https://www.instagram.com/mitsubishielectricuk_les)



Mitsubishi Electric Living
Environmental Systems UK



thehub.mitsubishielectric.co.uk

UNITED KINGDOM Mitsubishi Electric Europe Living Environment Systems Division, Travellers Lane, Hatfield, Hertfordshire, AL10 8XB, England. Telephone: 01707 282880 Fax: 01707 278881
IRELAND Mitsubishi Electric Europe, Westgate Business Park, Ballymount, Dublin 24, Ireland. Telephone: (01) 419 8800 Fax: (01) 419 8890 International code: (003531)

Country of origin: United Kingdom - Japan - Thailand - Malaysia. ©Mitsubishi Electric Europe 2020. Mitsubishi and Mitsubishi Electric are trademarks of Mitsubishi Electric Europe B.V. The company reserves the right to make any variation in technical specification to the equipment described, or to withdraw or replace products without prior notification or public announcement. Mitsubishi Electric is constantly developing and improving its products. All descriptions, illustrations, drawings and specifications in this publication present only general particulars and shall not form part of any contract. All goods are supplied subject to the Company's General Conditions of Sale, a copy of which is available on request. Third-party product and brand names may be trademarks or registered trademarks of their respective owners.

Note: The fuse rating is for guidance only. Please refer to the relevant databook for detailed specification. It is the responsibility of a qualified electrician/electrical engineer to select the correct cable size and fuse rating based on current regulation and site specific conditions. Mitsubishi Electric's air conditioning equipment and heat pump systems contain a fluorinated greenhouse gas, R410A (GWP:2088), R32 (GWP:675), R407C (GWP:1774), R134a (GWP:1430), R513A (GWP:631), R454B (GWP:466), R1234ze (GWP:7) or R1234yf (GWP:4). *These GWP values are based on Regulation (EU) No 517/2014 from IPCC 4th edition. In case of Regulation (EU) No.626/2011 from IPCC 3rd edition, these are as follows. R410A (GWP:1975), R32 (GWP:550), R407C (GWP:1650) or R134a (GWP:1300).

Effective as of May 2020

